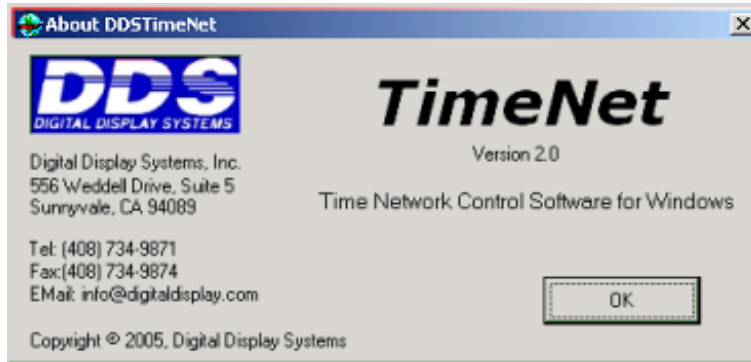
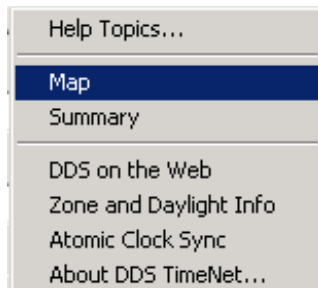


Overview

TimeNet from DDS is a windows-based application that provides a way for you to control and configure all of your DDS time-zone clocks from a single PC.



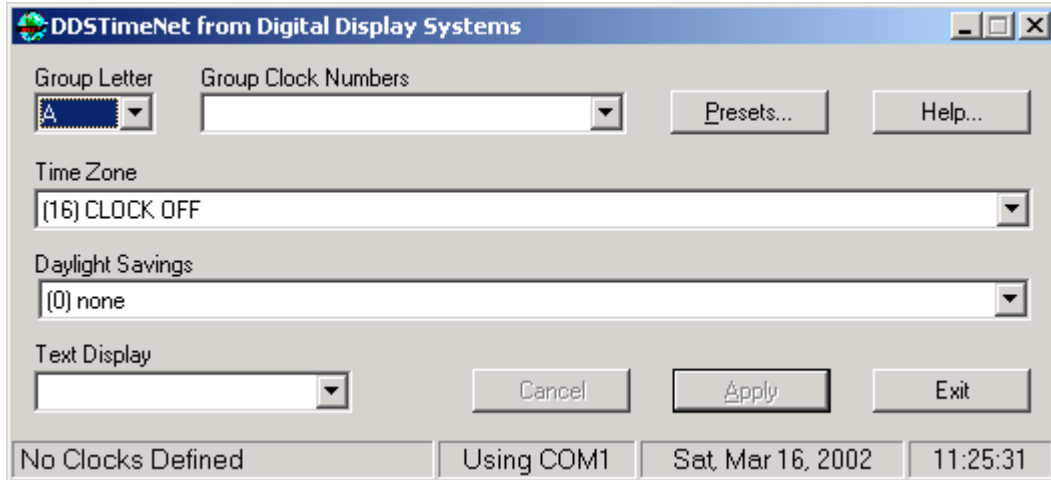
Each clock on your network has a unique "clock number" (from 0 to 99) that is assigned to the clock at installation time. Within the TimeNet application, you use the clock numbers to identify the clocks and to associate them with the various settings. The "Map" option on the Help Menu shows you a map of your installation including clock numbers for each clock on your network.



In addition to keeping all connected clocks synchronized to the second, the TimeNet application allows you to specify time zone, daylight savings, and the text display for individual clocks or groups of clocks.

Main Dialog

When you start TimeNet from your desktop, you see the main dialog window. This window remains open and visible as long as the application is running.



Group Letter

There are 26 different groups of clocks, named with letters A to Z. You may use as many groups as you like. You must define which of your clocks is to be in each group that you decide to use. All of the clocks in a group always display exactly the same exact information.

You select a group by means of the **Group Letter** dropdown list. When you select a group, the other fields of the dialog box change to show you the current settings for that group.

Group Clock Numbers

Each clock on your network has a unique "clock number" (from 0 to 99) that is assigned to the clock at installation time. You type the clock numbers of the clocks that you want in the selected group in the **Group Clock Numbers** text box. A dropdown list is provided containing the most recent entries, you have typed in this box. You may select an item from the dropdown list, or you may type an entirely new entry.

The clock numbers to be in the group are entered as a comma separated list of numbers, each in the range 0 to 99. For example:

5,32,56,77

selects four clocks to be in the group. You may also specify a range of clock numbers using a hyphen, for example:

5,32-40,56

selects clock numbers 5, 32, 33, 34, 35, 36, 37, 38, 39, 40 and 56 to be in the group.

Time Zone

The **Time Zone** selection tells which global time zone is to be displayed on the clocks in the group. A dropdown list of all available time zones is provided. Each item in the list has the following format:

(24) UTC-8 (Uniform) PST Pacific Standard Time

The number in parenthesis is the DDS Standard number for the Time Zone. The notation "UTC..." indicates the zone's offset from UTC (universal time code also sometimes called GMT, Greenwich Mean Time). For example, UTC-8 indicates the zone's is eight hours earlier than UTC, and UTC+4 indicates that the zone's time is four hours later than UTC.

The word in parenthesis, ("Uniform" in the above example) is the U. S. Military official name for the time zone. The 3-letter acronym following is the common abbreviation for the time zone. The remainder of the entry is the common English name of the time zone.

There is one special item "(16) CLOCK OFF". If you select this for the group, then the clock display is turned off and remains completely blank until you select a different time zone for it.

Daylight Savings

The **Daylight Savings** selection allows you to specify that automatic daylight savings correction is to be done for the current group, and, when daylight savings is to be automatically started and stopped. A dropdown list of all available modes is provided. Each item in the list has the following format:

**(1) 1st Sunday in Apr. 0159-0300 to Last Sunday in Oct.
0159-0100**

The number in parenthesis is the DDS Standard number for the Daylight Savings Mode. The remainder of the entry specifies the rule for automatically correcting for daylight savings. The rule in the example above says that daylight savings starts on the first Sunday in April by changing from the time 0159 to the time 0300 (instead of 0200). Similarly, daylight savings ends on the last Sunday in October by changing from time 0159 back to time 0100 (instead of 0200).

There are four special daylight savings selections (9) Forced hour, (10) Forced half hour, (25) Forced quarter-hour, and (26) Forced three-quarter hour. When selected, these correct by advancing the time in the selected zone by the indicated amount at all times. These may be used to either manually adjust for daylight savings or to select a half-hour time zone as utilized by some countries.

Text Display

The **Text Display** selection allows you to specify the text that appears in the 20-character display beneath the clocks in the group. A dropdown list is provided containing the most recent entries, you have typed in this box. You may select an item from the dropdown list, or you may type an entirely new entry.

Apply and Cancel Buttons

When you make a change in any of the selections for a group, the changes are not effected or saved until you press the **Apply Button**. Pressing Apply saves the changes permanently on your PC and immediately sends the changed configuration to the clocks in the group.

Pressing **Cancel** instead of **Apply**, returns the group settings to those that were last saved for that group, effectively undoing your recent modifications.

Even if you Exit the TimeNet application, the current settings for all of your groups are remembered and are restored the next time you run the application.

Presets Button

The **Presets Button** is used to start the [Presets Dialog](#). Presets provide an easy way to select the Time Zone, Daylight Savings, and Display Text for a group from a database in a single operation.

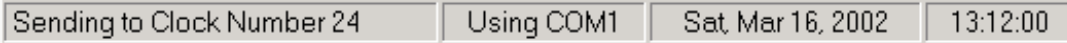
Help / Map

The **Map** option on the **Help Menu** shows you a map of your installation including clock numbers for each clock on your network.

Help / Summary

The **Summary** option on the **Help Menu** shows you a table summarizing the groups you are using and the clock numbers and settings for those groups. This table may be saved or printed by selecting the text in the window and then using CTRL-C to copy it, and then pasting it into a text editor such as notepad or WORD.

Status Bar



The status bar at the bottom of the main dialog window keeps you informed about the current state of the application.

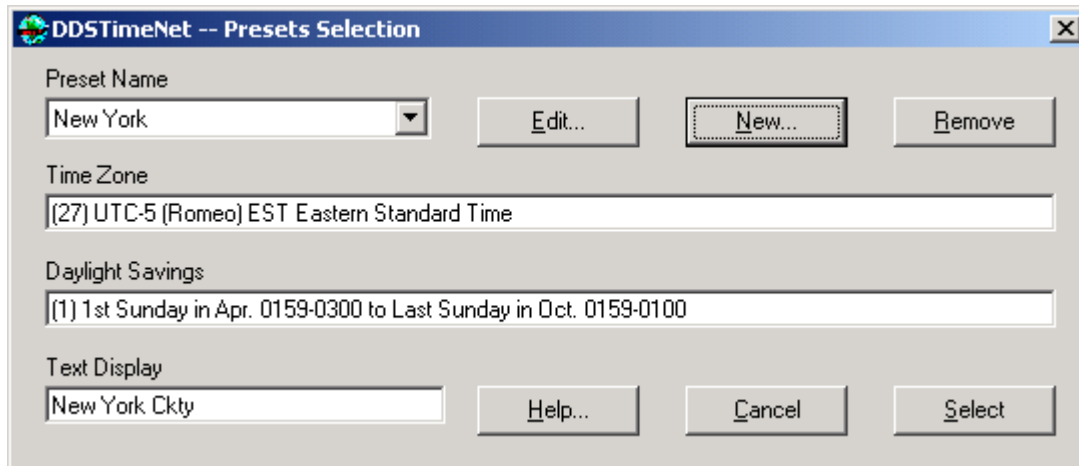
Whenever the TimeNet application is running, it constantly sends configuration and time corrections to all of the clocks in all of the groups you have defined, in a round-robin fashion. The leftmost pane of the status bar shows this action in real-time.

By default, TimeNet assumes your clock network is connected to your PC by means of the COM1 serial port. The second pane of the status bar reports which port is in use. To change which port is used you may edit the properties of the shortcut that starts the TimeNet application. Add the text " COMx" or "UDPyyyyy" to the end of the Target text, replacing x with the COM port number you wish to use. If connected via Ethernet, use the second format replacing yyyy with the port number to use (DDS Ethernet devices usually use UDP broadcast packets to port 55808). MAKE SURE there is a space before the word COM or UDP. You must restart the application in order to make this change take effect.

The remainder of the status bar tells you the current date and time (in 24-hour style) on your PC with regard to your current time zone.

Presets Dialog

The **Presets Dialog** is started by pressing the "Presets..." button in the main dialog window. Presets provide an easy way to select the Time Zone, Daylight Savings, and Display Text for a group from a database in a single operation.



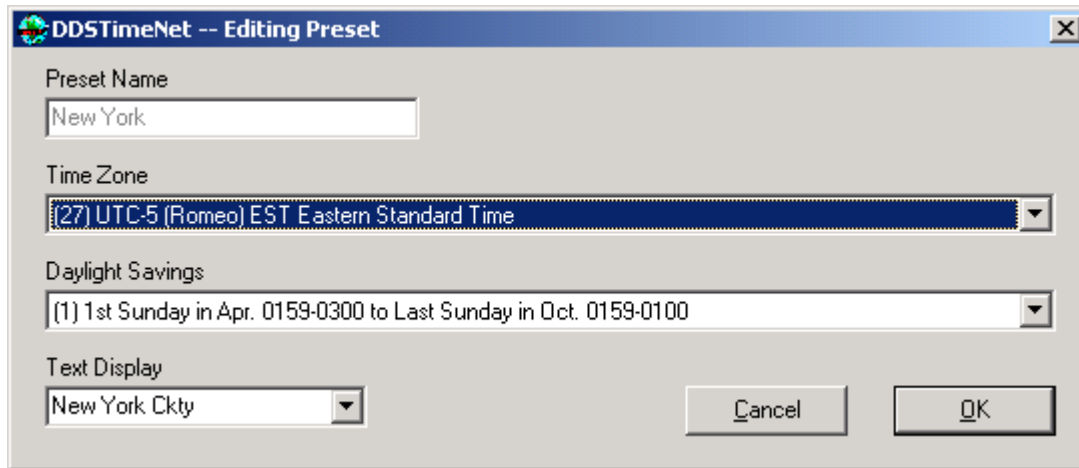
To use a preset, select it from the "Preset Name" dropdown list, and press the "Select" button. The Time Zone, Daylight Savings and Text Display are inserted into the selections for the current group in the main dialog window. This is simply a fast way to enter group selections for commonly used combinations.

When you change the selection in the Preset Name dropdown list, the other text boxes on the window change to show the settings associated with that preset. The other text boxes are not directly modifiable on the Preset Dialog.

TimeNet comes installed with a large list of presets. You may remove or change any of those presets by selecting the preset name and pressing the "Remove" or "Edit" button. You may add new presets by pressing the "New" button.

Pressing either Edit or New starts the [Preset Edit](#) dialog.

Preset Edit Dialog

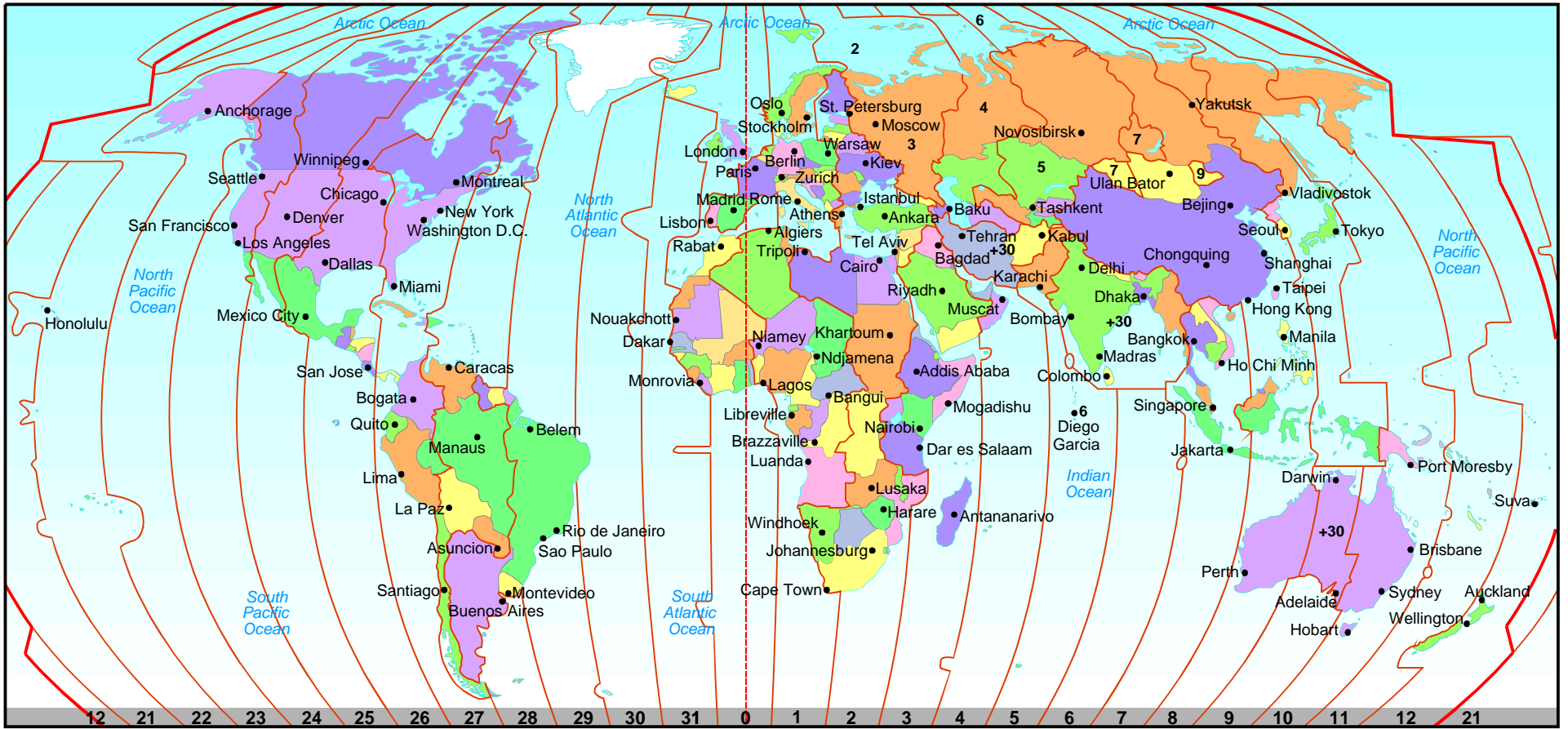


The **Preset Edit Dialog** starts whenever you press either the "New" or the "Edit".button on the [Presets Dialog](#).

For a new preset you must type a new name of your own choosing. If you duplicate the name of an existing preset, you are asked whether or not you want to replace the existing preset with your new one.

When editing an existing preset, the name box cannot be modified. To change the name of an existing preset, select the preset on the preset dialog and press "New", type the new name and press "OK". This creates a new preset identical to the old preset except with your new name. You may then use the "Remove" button to eliminate the old name.

Select the Time Zone, Daylight Savings and Text Display to be associated with the Preset Name and press OK. These three selections are identical to those on the main dialog.



DDS Daylight Saving Modes

Mode	Country	Start	Stop
0	none		
1	(Old) US, Canada, Bermuda	1 st Sunday in Apr. 0159 to 0300	Last Sunday in Oct. 0159 to 0100
2	Brazil	3 rd Sunday in Oct. 0159 to 0300	2 nd Sunday in Feb. 0159 to 0100
3	Argentina	3 rd Sunday in Oct. 0159 to 0300	1 st Sunday in Mar. 0159 to 0100
4	Chile	3 rd Sunday in Oct. 0159 to 0300	2 nd Sunday in Mar. 0159 to 0100
5	UK, Ireland	Last Sunday in Mar. 0159 to 0300	Next-to-Last Sunday in Oct. 0159 to 0100
6	Europe	Last Sunday in Mar. 0159 to 0300	Last Sunday in Sep. 0159 to 0100
7	Israel	4 th Sunday in Apr. 0159 to 0300	1 st Sunday in Sep. 0159 to 0100
8	(Old) Australia	Last Sunday in Oct. 0159 to 0300	3 rd Sunday in Mar. 0159 to 0100
9	Forced 1 hr. advance		
10	Forced ½ hr. advance		
11	(Old) New Zealand	2 nd Sunday in Oct. 0159 to 0300	3 rd Sunday in Mar. 0159 to 0100
12	Newfoundland (1/2 hr. forced advance plus DST)	1 st Sunday in Apr. 0159 to 0300	Last Sunday in Oct. 0159 to 0100
13	(Old) Australia	Last Sunday in Oct. 0159 to 0300	Last Sunday in Mar. 0259 to 0200
14	Paraguay	Apr. 1 0059 to 0200	Oct. 1 0159 to 0100
15	(Old) New Zealand	1 st Sunday in Oct. 0159 to 0300	1 st Sunday in Mar. on or after 15 th 0259 to 0200
16	Greece	Last Sunday in Mar. 0259 to 0400	Last Sunday in Oct. 0359 to 0300
17	Iraq	Last Sunday in Mar. 0059 to 0200	Last Sunday in Sep. 0159 to 0100
18	Lebanon	May 1 0059 to 0200	Oct. 16 0159 to 0100
19	Egypt	May 1 0159 to 0300	Oct. 1 0259 to 0200
20	UK, Ireland, Scotland	Last Sunday in Mar. 0059 to 0200	Last Sunday in Oct. 0159 to 0100
21	Cuba	1 st Sunday in Mar. on or after 14 th 0059 to 0200	1 st Sunday in Oct. on or after 8 th 0159 to 0100
22	Brazil	1 st Sunday in Oct. 0159 to 0300	1 st Sunday in Feb. on or after 11 th 0259 to 0200
23	Chile	1 st Sunday in Oct on or after 9 th 0159 to 0300	1 st Sunday in Mar. on or after 9 th 0259 to 0200
24	Iran	Mar. 21 0159 to 0300	Sept. 23 0259 to 0200
25	Forced ¼ hr. advance		
26	Forced ¾ hr. advance		
27	Egypt	Last Wednesday in Apr. 2359 to 0100	Last Wednesday in Oct. 2359 to 2300
28		Last Sunday in Mar. 0159 to 0300	Last Sunday in Nov. 0159 to 0100
29		1 st Sunday in Mar. 0159 to 0300	Last Sunday in Nov. 0159 to 0100
30	(New) US Starting 2007	2 nd Sunday in Mar. 0159 to 0300	1 st Sunday in Nov. 0159 to 0100
31	(New) Australia	1 st Sunday in Oct. 0159 to 0300	1 st Sunday in Apr. 0159 to 0100
32	(New) New Zealand	Last Sunday in Sep. 0159 to 0300	1 st Sunday in Apr. 0159 to 0100

Time zone master SBMATT-G Time zone slave SBMATV-A

The number in parentheses is the the **Daylight Number** and the next number is the **Zone Location**.

ABIDJAN	(0) 0	EDINBURGH	(20) 0	LOUISIANA	(30) 26	RIO DE JANEIRO	(0) 29
ADDIS ABABA	(0) 3	EGYPT	(27) 2	MADRID	(20) 1	RIYADH	(0) 3
AFGHANISTAN	(10) 4	ELMENDORF	(30) 23	MAINE	(30) 27	ROMEO	(30) 27
AFRICA	(0) 3	EL SEGUNDO	(30) 24	MANAGUA	(0) 26	RUSSIA	(20) 3
ALABAMA	(30) 26	EUCOM	(20) 1	MANILA	(0) 8	SAMOA	(0) 21
ALASKA	(30) 23	EUROPE	(20) 1	MARYLAND	(30) 27	SAN DIEGO	(30) 24
ALBUQUEQUE	(30) 25	FLORIDA	(30) 27	MASSACHUSETTS	(30) 27	SAN FRANCISCO	(30) 24
ALEUTIAN	(0) 22	FORT BELVOIR	(30) 27	MCDILL AFB	(30) 27	SANTIAGO	(23) 28
AL UDIED	(0) 3	FORT BRAGG	(30) 27	MELBOURNE	(31) 10	SAO PAULO	(22) 29
AMSTERDAM	(20) 1	FORT CAMPBELL	(30) 26	MEMPHIS	(30) 26	SAUDI ARABIA	(0) 3
ANCHORAGE	(30) 23	FORT HOOD	(30) 26	MEXICO CITY	(0) 26	SCOTT AFB	(30) 26
ANDERSON	(0) 10	FORT LEWIS	(30) 24	MIAMI	(30) 27	SEOUL	(0) 9
ANKARA	(20) 2	FORSKOM	(30) 27	MICHIGAN	(30) 27	SEATTLE	(30) 24
ARGENTINA	(0) 29	FRANKFURT	(20) 1	MIDWAY	(30) 21	SHANGHAI	(0) 8
ARIZONA	(0) 25	GENEVA	(20) 1	MILAN	(20) 1	SHEMYA	(30) 22
ARKANSAS	(30) 26	GERMANY	(20) 1	MILLINGTON	(30) 26	SIERRA	(30) 26
ATHENS	(20) 2	GEORGIA	(30) 27	MINNESOTA	(30) 26	SILICON VALLEY	(30) 24
ATLANTA	(30) 27	GMT	(0) 0	MISAWA	(0) 9	SINGAPORE	(0) 8
ATLANTIC	(30) 28	GREECE	(20) 2	MISSISSIPPI	(30) 26	SOMALIA	(0) 3
AUCKLAND	(32) 12	GREELY	(30) 23	MISSOURI	(30) 26	SOUTH AFRICA	(0) 2
AUSTRIA	(20) 1	GREENWICH	(0) 0	MOLESWORTH	(20) 0	SOUTH CAROLINA	(30) 27
AUSTRALIA	(31) 10	GUAM	(0) 10	MOMBASA	(0) 3	SOUTH DAKOTA	(30) 26
BAGHDAD	(14) 3	GUATEMALA	(0) 26	MONACO	(20) 1	SPAIN	(20) 1
BAHRAIN	(0) 3	HAGUE	(20) 1	MONTANA	(30) 25	ST. JOHN'S	(12) 28
BALIKPAPAN	(0) 8	HALIFAX	(30)28	MONTREAL	(30) 27	ST. LOUIS	(30) 26
BALTIMORE	(30) 27	HAWAII	(0) 22	MOSCOW	(20) 3	STUTTGART	(20) 1
BANGALORE	(10) 5	HELSINKE	(20) 2	MOUNTAIN	(30) 25	SW ASIA	(0) 8
BANGKOK	(0) 7	HICKAM	(0) 22	MUMBAI	(10) 5	SWITZERLAND	(20) 1
BARBADOS	(30) 28	HOLLAND	(20) 1	MUNICH	(20) 1	SYDNEY	(31) 10
BARCELONA	(20) 1	HONG KONG	(0) 8	NAIROBI	(0) 3	TAIPEI	(0) 8
BASEL	(20) 1	HUNTSVILLE, AL	(30) 27	NAPLES	(20) 1	TAIWAN	(0) 8
BEIJING	(0) 8	HURLBURT	(30) 27	NEBRASKA	(30) 26	TAMPA	(30) 27
BEIRUT	(16) 2	HYDERABAD	(10) 5	NETHERLANDS	(20) 1	TEHRAN	(10) 3
BERMUDA	(30) 28	ICELAND	(0) 0	NEVADA	(30) 24	TEL AVIV	(5) 2
BOGOTA	(0) 27	IDAHO	(30) 25	NEW DELHI	(10) 5	TENNESSEE-NASH	(30) 26
BOMBAY	(10) 5	ILLINOIS	(30) 26	NEW HAMPSHIRE	(30) 27	TENNESSEE-KNOX	(30) 27
BOSNIA	(20) 1	INCIRLIC	(20) 2	NEW JERSEY	(30) 27	TEXAS	(30) 26
BRAZIL	(22) 29	INDIA	(10) 5	NEW MEXICO	(30) 25	THAILAND	(0) 7
BRUSSELS	(20) 1	INDIANA	(30) 27	NEW YORK	(30) 27	TIJUANA	(0) 26
BUDAPEST	(20) 2	INDONESIA	(0) 8	NEW ZEALAND	(32) 12	TOKYO	(0) 9
BUENOS AIRES	(0) 29	IOWA	(30) 26	NEWFOUNDLAND	(12) 28	TORONTO	(30) 27
CAIRO	(27) 2	IRAN	(10) 3	NORTH CAROLINA	(30) 27	TRAVIS AFB	(30) 24
CALGARY	(30) 25	IRAQ	(14) 3	NORTH DAKOTA	(30) 26	TURKEY	(20) 2
CALIFORNIA	(30) 24	IRELAND	(20) 0	NORWAY	(20) 1	UAE	(0) 4
CANBERRA	(31) 10	ISLAMABAD	(0) 5	OHIO	(30) 27	UKRIANE	(20) 2
CARACAS	(30) 28	ISRAEL	(7) 2	OKINAWA	(0) 9	UNITED KINGDOM	(20) 0
CENTCOM	(0) 3	ISTANBUL	(20) 1	OKLAHOMA	(30) 26	UTAH	(30) 25
CENTRAL	(30) 26	ITALY	(20) 1	OMAHA	(30) 26	UTC	(0) 0
CENTRAL EUROPE	(20) 1	JAKARTA	(0) 7	OMAN	(0) 4	VANCOUVER	(30) 24
CHENNAI	(10) 5	JAPAN	(0) 9	ONIZUKA (CA)	(30) 24	VENEZUELA	(30) 28
CHICAGO	(30) 26	JOHANNESBURG	(0) 2	OREGON	(30) 24	VERMONT	(30) 27
CHILE	(23) 28	JUNEAU	(30) 23	OTTAWA	(30) 27	VIENNA	(20) 1
CHINA	(0) 8	KABUL	(10) 4	PACIFIC	(30) 24	VIRGINIA	(30) 27
COLORADO SPRINGS	(30) 25	KADENA	(0) 9	PACOM AK/HI	(0) 22	VLADIVOSTOK	(20) 10
COLUMBIA	(0) 27	KANSAS	(30) 26	PAKISTAN	(0) 5	WASHINGTON	(30) 24
COMALAPA	(0) 26	KAPAUN	(20) 1	PARIS	(20) 1	WASHINGTON D.C.	(30) 27
CONNECTICUT	(30) 27	KARACHI	(0) 5	PENNSYLVANIA	(30) 27	WEST COAST	(30) 24
DAKAR	(0) 31	KENTUCKY	(30) 27	PENTAGON	(30) 27	WEST VIRGINIA	(30) 27
DALLAS	(30) 26	KEY WEST	(30) 27	PHILADELPHIA	(30) 27	WICHITA	(30) 26
DELAWARE	(30) 27	KOBE	(0) 9	PHILIPPINES	(0) 8	WIESBADEN	(20) 1
DENVER	(30) 25	KODIAK	(30) 23	PHOENIX	(0) 25	WILLEMSTAD	(20) 1
DETROIT	(30) 27	KOREA	(0) 9	POLAND	(20) 1	WINNIPEG	(30) 26
DHAKA	(0) 6	KUALA LUMPUR	(0) 8	PRAGUE	(20) 1	WISCONSIN	(30) 26
DIEGO GARCIA	(0) 6	KUWAIT	(0) 3	PRINCE SULTAN	(0) 3	WOOMERA	(13) 10
DOHA	(0) 3	KWAJALEIN	(0) 12	PUERTO RICO	(0) 28	WYOMING	(30) 25
DOVER	(30) 27	KYRGYZSTAN	(16) 5	QATAR	(0) 3	YOKOHAMA	(0) 9
DUBAI	(0) 4	LANGLEY AFB	(30) 27	RAMSTEIN	(20) 1	YOKOTA	(0) 9
DUBLIN	(20) 0	LAS VEGAS	(30) 24	REDMOND	(30) 24	ZULU	(0) 0
DULLES	(30) 27	LONDON	(20) 0	RHODE ISLAND	(30) 27	ZURICH	(20) 1
EAST COAST	(30) 27	LOS ANGELES	(30) 24	RIO	(22) 29		