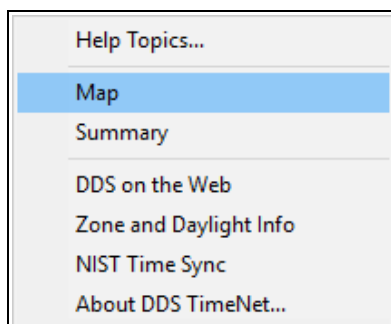


Overview

TimeNet from DDS is a windows-based application that provides a way for you to control and configure all your DDS time-zone clocks from a single PC.



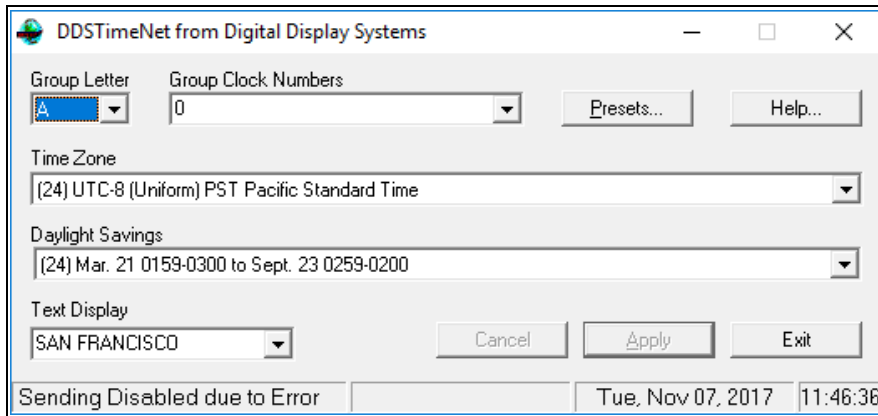
Each clock on your network has a unique "clock number" (from 0 to 99) that is assigned to the clock at installation time. Within the TimeNet application, you use the clock numbers to identify the clocks and to associate them with the various settings. The "Map" option on the Help Menu shows you a map of your installation including clock numbers for each clock on your network.



In addition to keeping all connected clocks synchronized to the second, the TimeNet application allows you to specify time zone, daylight savings, and the text display for individual clocks or groups of clocks.

Main Dialog

When you start TimeNet from your desktop, you see the main dialog window. This window remains open and visible as long as the application is running.



Group Letter

There are 26 different groups of clocks, named with letters A to Z. You may use as many groups as you like. You must define which of your clocks is to be in each group that you decide to use. All the clocks in a group always display the same exact information.

You select a group by means of the **Group Letter** dropdown list. When you select a group, the other fields of the dialog box change to show you the current settings for that group.

Group Clock Numbers

Each clock on your network has a unique "clock number" (from 0 to 99) that is assigned to the clock at installation time. You type the clock numbers of the clocks that you want in the selected group in the **Group Clock Numbers** text box. A dropdown list is provided containing the most recent entries, you have typed in this box. You may select an item from the dropdown list, or you may type an entirely new entry.

The clock numbers to be in the group are entered as a comma separated list of numbers, each in the range 0 to 99. For example:

5,32,56,77

selects four clocks to be in the group. You may also specify a range of clock numbers using a hyphen, for example:

5, 32-40, 56

selects clock numbers 5, 32, 33, 34, 35, 36, 37, 38, 39, 40 and 56 to be in the group.

Time Zone

The **Time Zone** selection tells which global time zone is to be displayed on the clocks in the group. A dropdown list of all available time zones is provided. Each item in the list has the following format:

(24) UTC-8 (Uniform) PST Pacific Standard Time

The number in parenthesis is the DDS Standard number for the Time Zone. The notation "UTC..." indicates the zone's offset from UTC (universal time code also sometimes called GMT, Greenwich Mean Time). For example, UTC-8 indicates the zone's is eight hours earlier than UTC, and UTC+4 indicates that the zone's time is four hours later than UTC.

The word in parenthesis, ("Uniform" in the above example) is the U. S. Military official name for the time zone. The 3-letter acronym following is the common abbreviation for the time zone. The remainder of the entry is the common English name of the time zone.

There is one special item "(16) CLOCK OFF". If you select this for the group, then the clock display is turned off and remains completely blank until you select a different time zone for it.

Daylight Savings

The **Daylight Savings** selection allows you to specify that automatic daylight savings correction is to be done for the current group, and, when daylight savings is to be automatically started and stopped. A dropdown list of all available modes is provided. Each item in the list has the following format:

**(1) 1st Sunday in Apr. 0159-0300 to Last Sunday in Oct.
0159-0100**

The number in parenthesis is the DDS Standard number for the Daylight Savings Mode. The remainder of the entry specifies the rule for automatically correcting for daylight savings. The rule in the example above says that daylight savings starts on the first Sunday in April by changing from the time 0159 to the time 0300 (instead of 0200). Similarly, daylight savings ends on the last Sunday in October by changing from time 0159 back to time 0100 (instead of 0200).

There are four special daylight savings selections (9) Forced hour, (10) Forced half hour, (25) Forced quarter-hour, and (26) Forced three-quarter hour. When selected, these correct by advancing the time in the selected zone by the indicated amount at all times. These may be used to either manually adjust for daylight savings or to select a half-hour time zone as utilized by some countries.

Text Display

The **Text Display** selection allows you to specify the text that appears in the 20-character display beneath the clocks in the group. A dropdown list is provided containing the most recent entries, you have typed in this box. You may select an item from the dropdown list, or you may type an entirely new entry.

Apply and Cancel Buttons

When you make a change in any of the selections for a group, the changes are not affected or saved until you press the **Apply Button**. Pressing Apply saves the changes permanently on your PC and immediately sends the changed configuration to the clocks in the group.

Pressing **Cancel** instead of **Apply**, returns the group settings to those that were last saved for that group, effectively undoing your recent modifications.

Even if you Exit the TimeNet application, the current settings for all groups are remembered and are restored the next time you run the application.

Presets Button

The **Presets Button** is used to start the [Presets Dialog](#). Presets provide an easy way to select the Time Zone, Daylight Savings, and Display Text for a group from a database in a single operation.

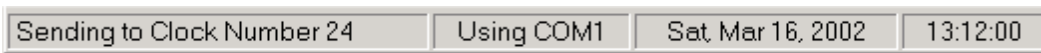
Help / Map

The **Map** option on the **Help Menu** shows you a map of your installation including clock numbers for each clock on your network.

Help / Summary

The **Summary** option on the **Help Menu** shows you a table summarizing the groups you are using and the clock numbers and settings for those groups. This table may be saved or printed by selecting the text in the window and then using CTRL-C to copy it, and then pasting it into a text editor such as notepad or WORD.

Status Bar



The status bar at the bottom of the main dialog window keeps you informed about the current state of the application.

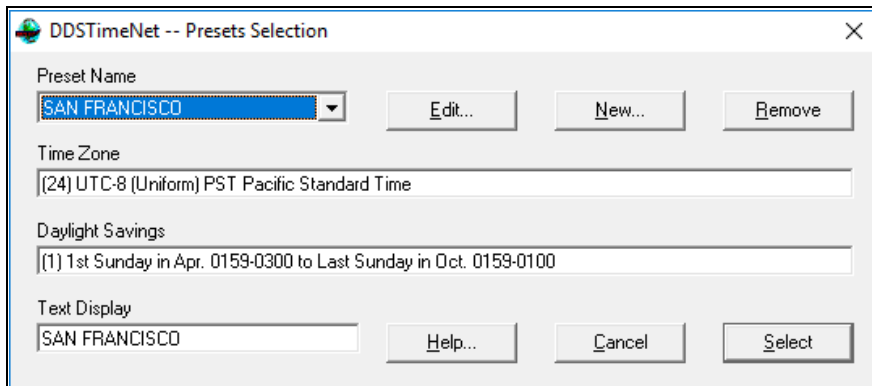
Whenever the TimeNet application is running, it constantly sends configuration and time corrections to all the clocks in all the groups you have defined, in a round-robin fashion. The leftmost pane of the status bar shows this action in real-time.

By default, TimeNet assumes your clock network is connected to your PC by means of the COM1 serial port. The second pane of the status bar reports which port is in use. To change which port is used you may edit the properties of the shortcut that starts the TimeNet application. Add the text " COMx" or "UDPyyyyy" to the end of the Target text, replacing x with the COM port number you wish to use. If connected via Ethernet, use the second format replacing yyyyy with the port number to use (DDS Ethernet devices usually use UDP broadcast packets to port 55808). MAKE SURE there is a space before the word COM or UDP. You must restart the application to make this change take effect.

The remainder of the status bar tells you the current date and time (in 24-hour style) on your PC with regard to your current time zone.

Presets Dialog

The **Presets Dialog** is started by pressing the "Presets..." button in the main dialog window. Presets provide an easy way to select the Time Zone, Daylight Savings, and Display Text for a group from a database in a single operation.



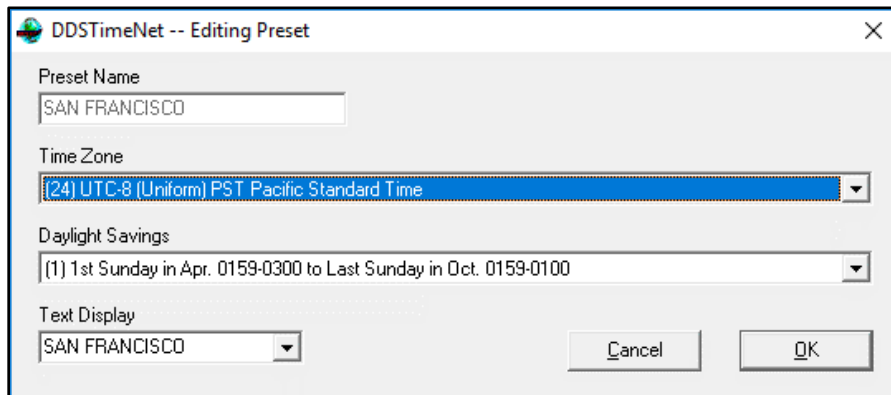
To use a preset, select it from the "Preset Name" dropdown list, and press the "Select" button. The Time Zone, Daylight Savings and Text Display are inserted into the selections for the current group in the main dialog window. This is simply a fast way to enter group selections for commonly used combinations.

When you change the selection in the Preset Name dropdown list, the other text boxes on the window change to show the settings associated with that preset. The other text boxes are not directly modifiable on the Preset Dialog.

TimeNet comes installed with a large list of presets. You may remove or change any of those presets by selecting the preset name and pressing the "Remove" or "Edit" button. You may add new presets by pressing the "New" button.

Pressing either Edit or New starts the [Preset Edit](#) dialog.

Preset Edit Dialog



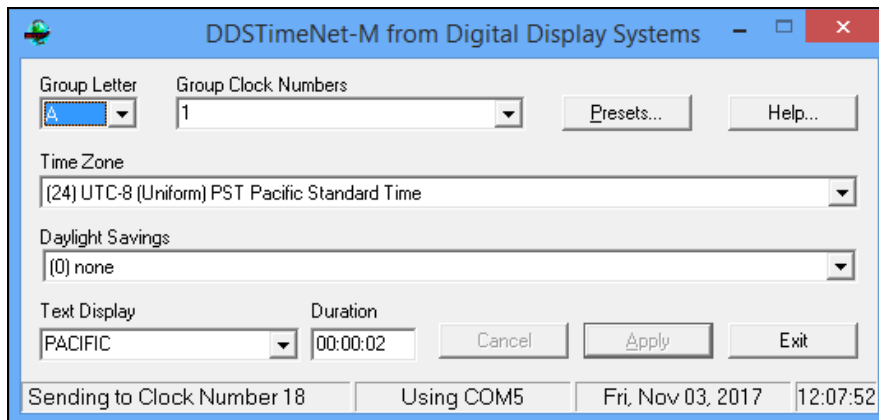
The **Preset Edit Dialog** starts whenever you press either the "New" or the "Edit" button on the [Presets Dialog](#).

For a new preset you must type a new name of your own choosing. If you duplicate the name of an existing preset, you are asked whether you want to replace the existing preset with your new one.

When editing an existing preset, the name box cannot be modified. To change the name of an existing preset, select the preset on the preset dialog and press "New", type the new name and press "OK". This creates a new preset identical to the old preset except with your new name. You may then use the "Remove" button to eliminate the old name.

Select the Time Zone, Daylight Savings and Text Display to be associated with the Preset Name and press OK. These three selections are identical to those on the main dialog.

Rotating Zone Locations



<http://www.digitaldisplay.com/timezone-clocks/dot-matrix-timezone-clocks/downloads/>

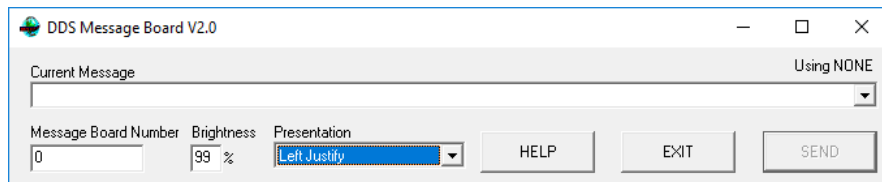
To change the settings on a clock with rotating zones, you must use the program **DDSTimeNet-M-2.1** which can be found on the DVD provided or on the Digital Display website link above.

DDSTimeNet-M-2.1 works the same as the original Timenet software. Use the "Map" option on the Help Menu to show you the clock numbers for each of the rotating zones.

Duration

The duration selection is used to determine how long each zone is shown before it rotates and moves on to the next zone. The duration is set as "Hours : Minutes : Seconds". For example, "01:30:10" would rotate the zones every one hour, thirty minutes, and ten seconds.

DDS Message Board



If your clock comes with a static or scrolling message board, install and start **DDSMsgBoard** to change the message in the “Current Message” field.

Message Board Number

Each message board is assigned a number. If your clock only has one message board, then the default message board number is “0.” If your product displays several messages, then each one is assigned a different number starting from 0, 1, 2,... Choose a message board number to change that message.

Brightness

Change the brightness of the message here. For best results, the recommended brightness is 80%.

Presentation

The “Presentation” selection determines how you want the message to be displayed. “Left Justify”, “Right Justify”, and “Center” are static positions, while “Slow Crawl”, “Medium Crawl”, and “Fast Crawl” are scrolling.